

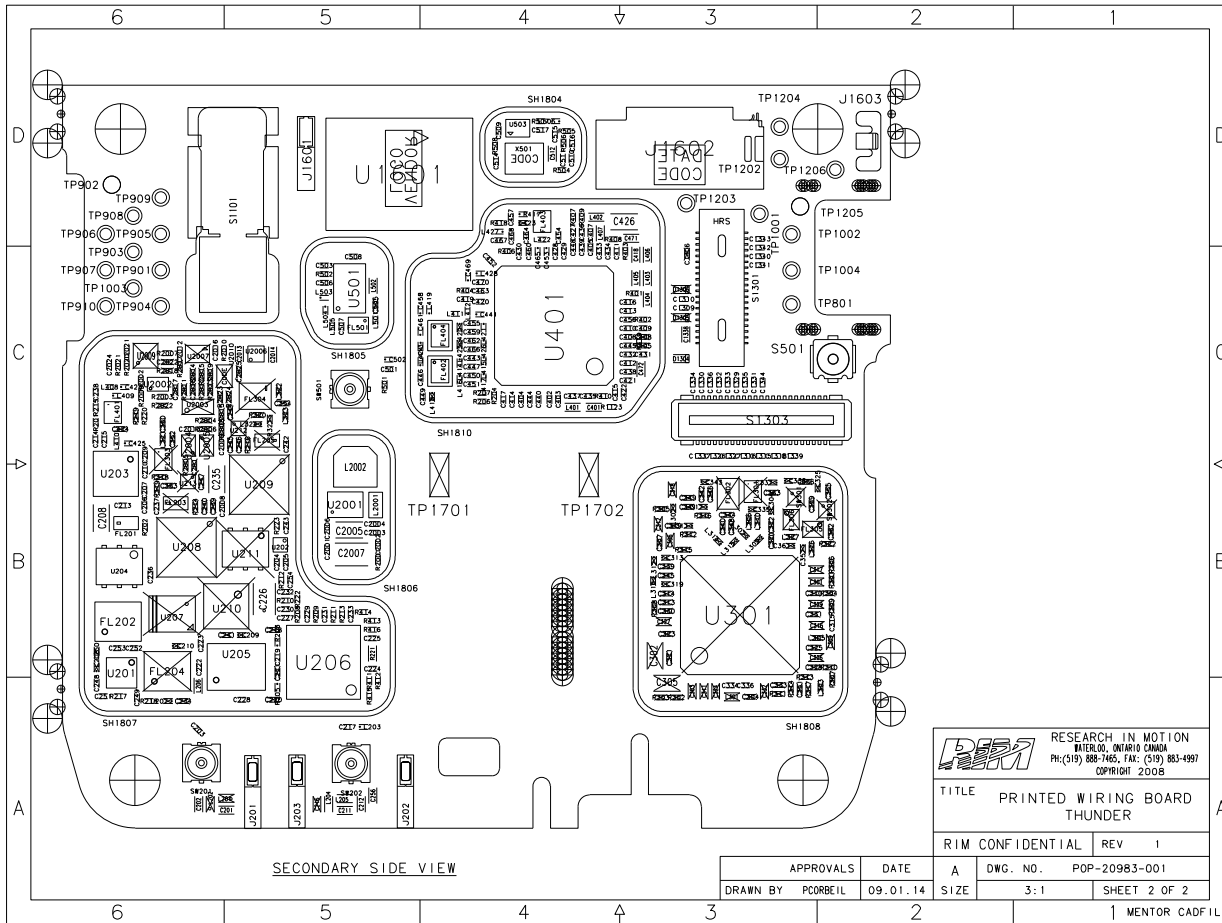
REVISIONS			
REV	ECN	DESCRIPTION	DATE
1	13644	PRODUCTION RELEASE	PC 090114

- NOTES:
1. MAXIMUM BREAKAWAY VESTIGE FROM MAIN BOARD EDGE SHALL BE 0.2MM AT uSB AREA, 0.3MM EVERYWHERE ELSE.
 2. ACCEPTABILITY OF ASSEMBLY TO MEET IPC 610 (LATEST ISSUE), CLASS 2.
 3. THE SOLDER AND ASSEMBLY PROCESS SHALL COMPLY WITH DIRECTIVE 2002/95/EC (ROHS) AND RIM ENVIRONMENTAL SPECIFICATIONS.

IBM RESEARCH IN MOTION
 WATERLOO, ONTARIO CANADA
 PH: (519) 888-7465, FAX: (519) 883-4997
 COPYRIGHT 2008

TITLE PRINTED WIRING BOARD THUNDER

APPROVALS	DATE	A	DWG. NO.	POP-20983-001
DRAWN BY PCORBEIL	09.01.14	SIZE	3:1	SHEET 1 OF 2



RESEARCH IN MOTION
 WATERLOO, ONTARIO CANADA
 PH: (519) 888-7465, FAX: (519) 883-4997
 COPYRIGHT 2008

TITLE PRINTED WIRING BOARD
 THUNDER

RIM CONFIDENTIAL REV 1

APPROVALS	DATE	A	DWG. NO.	POP-20983-001
DRAWN BY	PCORBEIL	09.01.14	SIZE	3:1