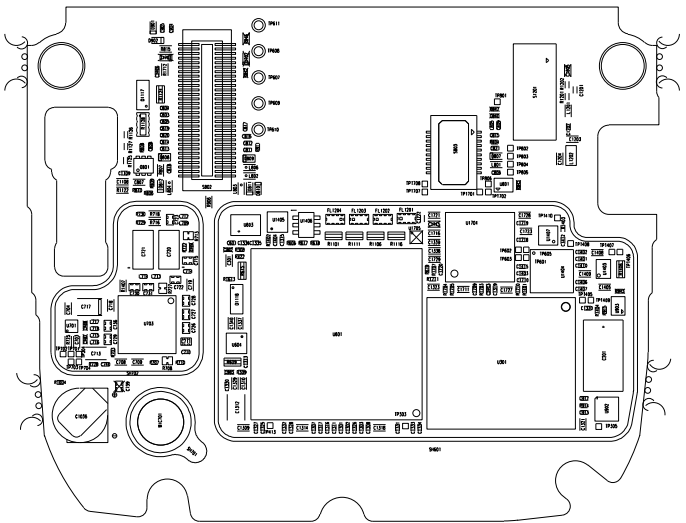


6 5 4 3 2 1

D

D

PRIMARY SIDE VIEW



NOTES:

1. ACCEPTABILITY OF ASSEMBLY TO MEET IPC 610 (LATEST ISSUE), CLASS 2.
2. C1056 IS HEAT SENSITIVE, DISCHARGE BEFORE REWORKING.
3. THE SOLDER AND ASSEMBLY PROCESS SHALL COMPLY WITH DIRECTIVE 2002/95/EC (ROHS) AND RIM ENVIRONMENTAL SPECIFICATIONS.

C


C

B

B

A

A

		RESEARCH IN MOTION WATERLOO, ONTARIO CANADA PH: (519) 888-7465, FAX: (519) 883-4997 COPYRIGHT 2007	
		TITLE PRINTED WIRING BOARD Javelin w/ GND Stitching	
RIM CONFIDENTIAL		REV D	
APPROVALS		DATE	
DRAWN BY M JACKSON		08.09.19	
B	DWG. NO.	POP-17811-006	
SIZE			SHEET 1 OF 2

6 5 4 3 2 1

MENTOR CADFILE

6 5 4 3 2 1

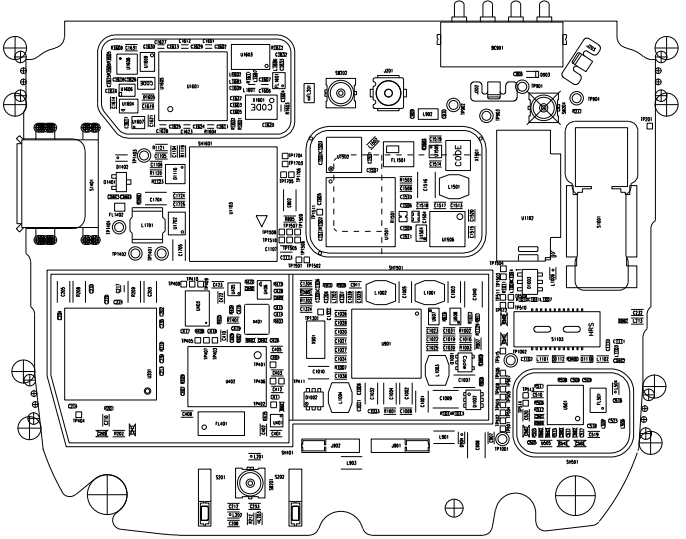
D

D

NOTE:

- 1. SW201, SW202, SW203 ORIENTATIONS ARE SIGNIFICANT

SECONDARY SIDE VIEW



C

C

B

B

A

A



RESEARCH IN MOTION
 WATERLOO, ONTARIO CANADA
 PH: (519) 888-7465, FAX: (519) 883-4997
 COPYRIGHT 2007

TITLE PRINTED WIRING BOARD
 Javelin w/ GND Stitching

RIM CONFIDENTIAL | REV D

APPROVALS	DATE
DRAWN BY M JACKSON	08.09.19

B	DWG. NO.	POP-17811-006
SIZE	SHEET 2 OF 2	

6 5 4 3 2 1

MENTOR CADFILE