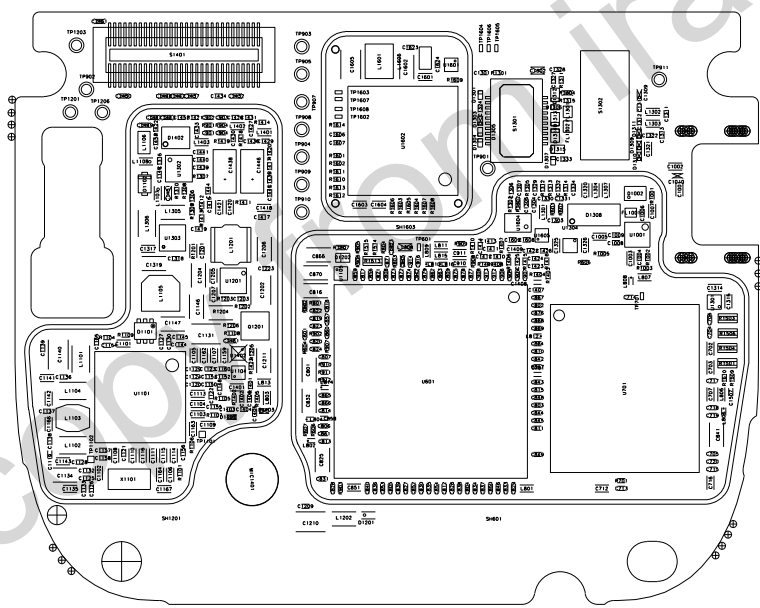


PRIMARY SIDE VIEW



REV		ECN	DESCRIPTION	DFTS	DATE
3		30583	AS PER ECN	PS	101112

- NOTES:
1. MAXIMUM BREAKAWAY VESTIGE FROM MAIN EDGE SHALL BE 0.3MM. Ø
 2. ACCEPTABILITY OF ASSEMBLY TO MEET IPC 610 (LATEST ISSUE), CLASS 2.
 3. THE SOLDER AND ASSEMBLY PROCESS SHALL COMPLY WITH DIRECTIVE 2002/95/EC (ROHS) AND RIM ENVIRONMENTAL SPECIFICATIONS.

RIM RESEARCH IN MOTION
 WATERLOO, ONTARIO CANADA
 PH: (519) 888-7465, FAX: (519) 883-4997
 COPYRIGHT 2010

TITLE PRINTED WIRING BOARD
 ESSEX JTAC Disabled

RIM CONFIDENTIAL REV 3

APPROVALS	DATE	A	DWG. NO.	POP-27613-004
D.READER	10.11.12		3:1	SHEET 1 OF 2

1 MENTOR CADC FILE

