
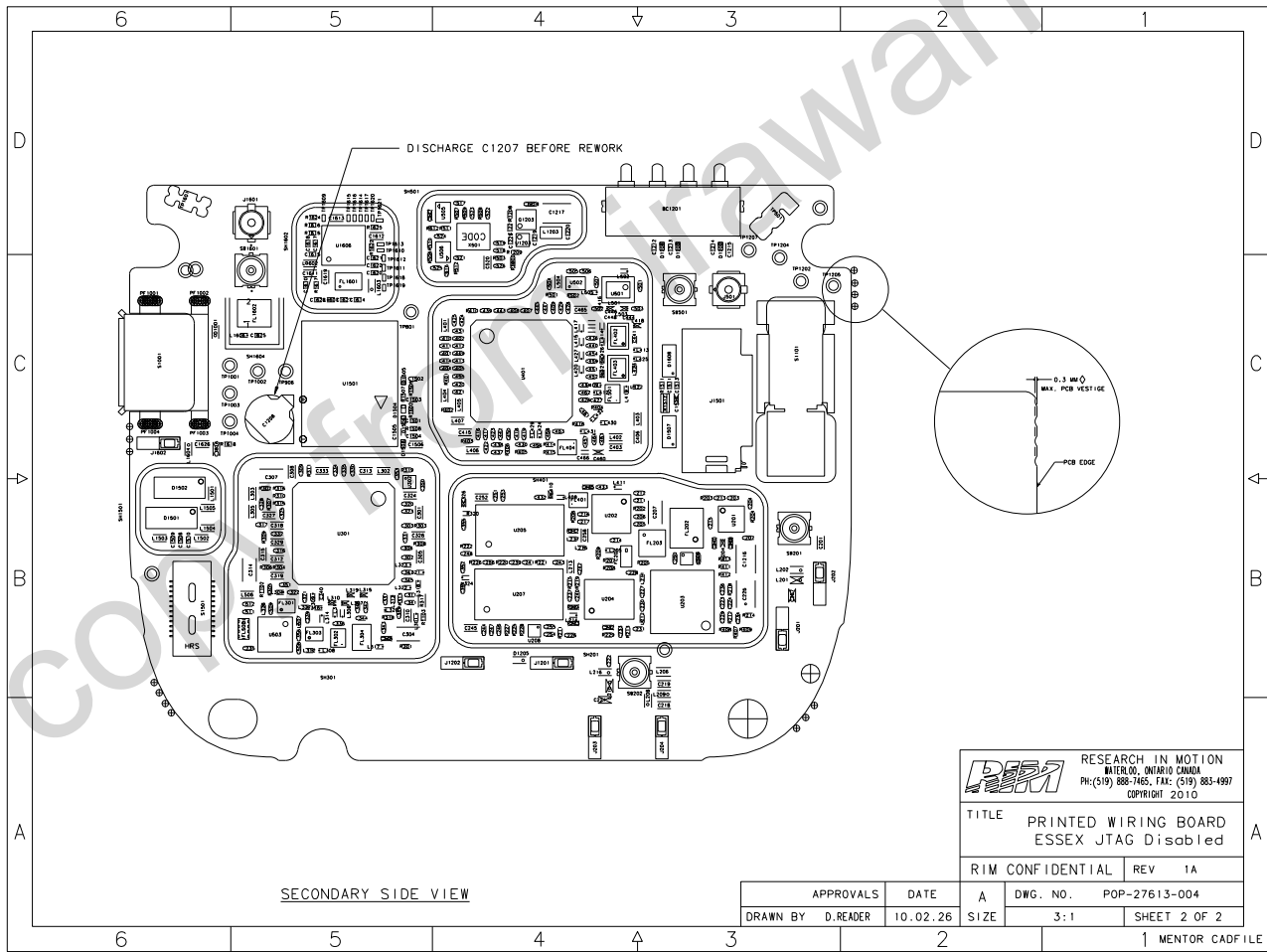


- NOTES:
1. MAXIMUM BREAKAWAY VESTIGE FROM MAIN EDGE SHALL BE 0.3MM, Ø
 2. ACCEPTABILITY OF ASSEMBLY TO MEET IPC 610 (LATEST ISSUE), CLASS 2.
 3. THE SOLDER AND ASSEMBLY PROCESS SHALL COMPLY WITH DIRECTIVE 2002/95/EC (ROHS) AND RIM ENVIRONMENTAL SPECIFICATIONS.

 RESEARCH IN MOTION WATERLOO, ONTARIO CANADA Ph: (519) 888-7465, Fax: (519) 883-4997 COPYRIGHT 2010		TITLE	
		PRINTED WIRING BOARD ESSEX JTAC Disabled	
RIM CONFIDENTIAL		REV 1A	
APPROVALS	DATE	A	DWG. NO. POP-27613-004
DRAWN BY D.READER	10.02.26	SIZE	3:1 SHEET 1 OF 2
		1 MENTOR CAD FILE	



DISCHARGE C1207 BEFORE REWORK

0.3 MM
MAX. PCB VESTIGE

PCB EDGE

SECONDARY SIDE VIEW

PPM RESEARCH IN MOTION
WATERLOO, ONTARIO CANADA
PH: (519) 888-7465, FAX: (519) 883-4997
COPYRIGHT 2010

TITLE PRINTED WIRING BOARD
ESSEX JTAG Disabled

RIM CONFIDENTIAL REV 1A

APPROVALS	DATE	A	DWG. NO.	POP-27613-004
DRAWN BY D.READER	10.02.26	SIZE	3:1	SHEET 2 OF 2

MENTOR CAD FILE