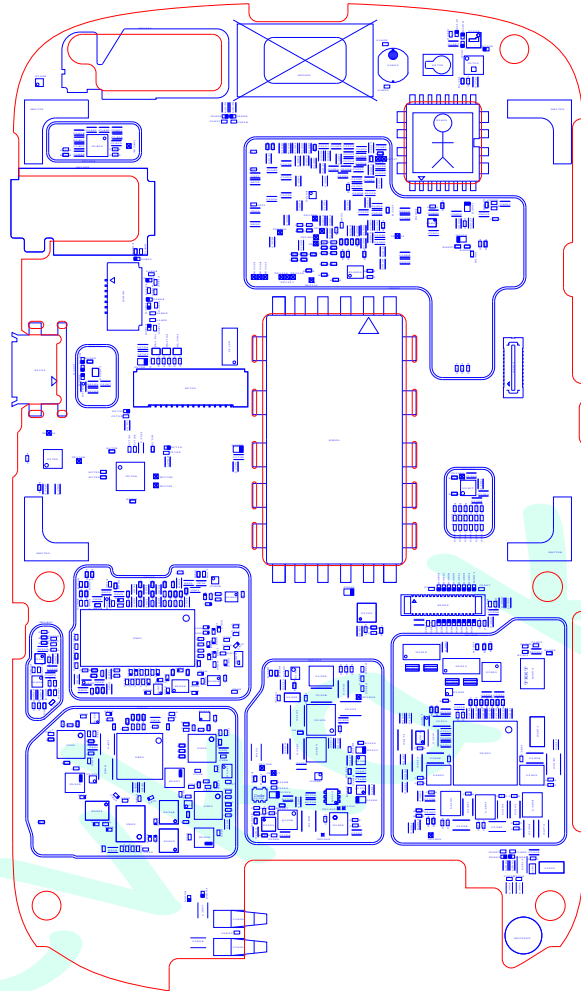


THE SOLDER AND ASSEMBLY PROCESS SHALL COMPLY WITH  
 DIRECTIVE 2002/95/EC (ROHS) AND RIM ENVIRONMENTAL  
 SPECIFICATIONS



SCALE 1:1

PCB ASSEMBLY VIEWED FROM PRIMARY SIDE (SIDE A)



RESEARCH IN MOTION  
 COPYRIGHT 2010

TITLE PRINTED WIRING BOARD  
 R00SR01825W 6552-MEE-IMR DDR

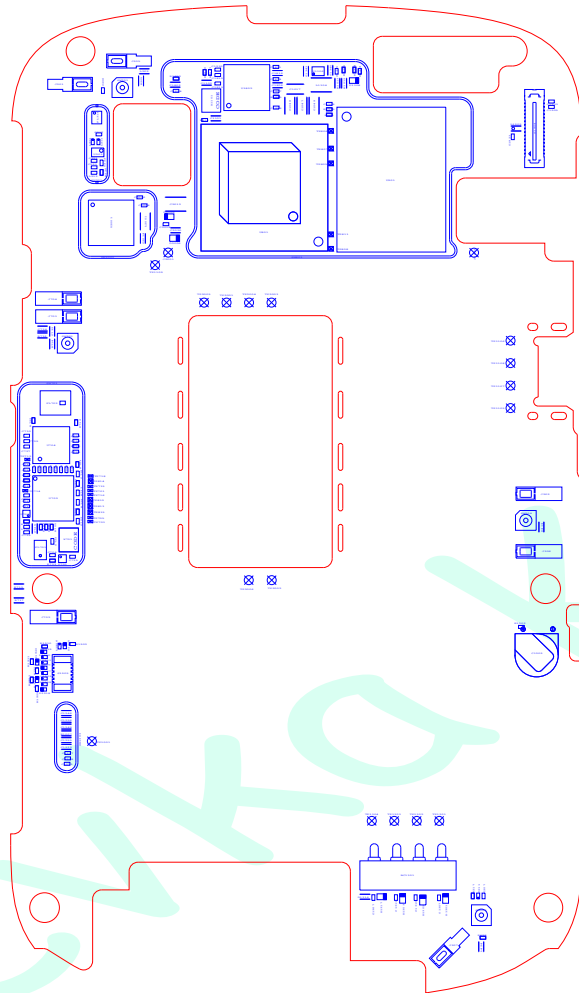
RIM CONFIDENTIAL REV: B

A DWG. NO. POP-38888-002

SIZE SCALE 1:1 SHEET 1 of 2

APPROVALS	DATE
DRAWN BY: <del>ThaEMOHua</del>	10.12.15

THE SOLDER AND ASSEMBLY PROCESS SHALL COMPLY WITH  
DIRECTIVE 2002/95/EC (ROHS) AND RIM ENVIRONMENTAL  
SPECIFICATIONS



SCALE 1:1

PCB ASSEMBLY VIEWED FROM SECONDARY SIDE (SIDE B)



RESEARCH IN MOTION  
COPYRIGHT

TITLE PRINTED WIRING BOARD  
R00SR01825W 6552-MEB-IMR DDR

RIM CONFIDENTIAL REV: B

A DWG. NO. POP-38888-002

APPROVALS	DATE	A	DWG. NO. POP-38888-002
DRAWN BY: <del>ThaEMOHua</del>	10.12.15	SIZE	SCALE 1:1 SHEET 2 of 2