

PRIMARY SIDE VIEW

REVISIONS				
REV	ECN	DESCRIPTION	DFTS	DATE
1A	15827	PRE-PRODUCTION RELEASE	PC	09.08.25

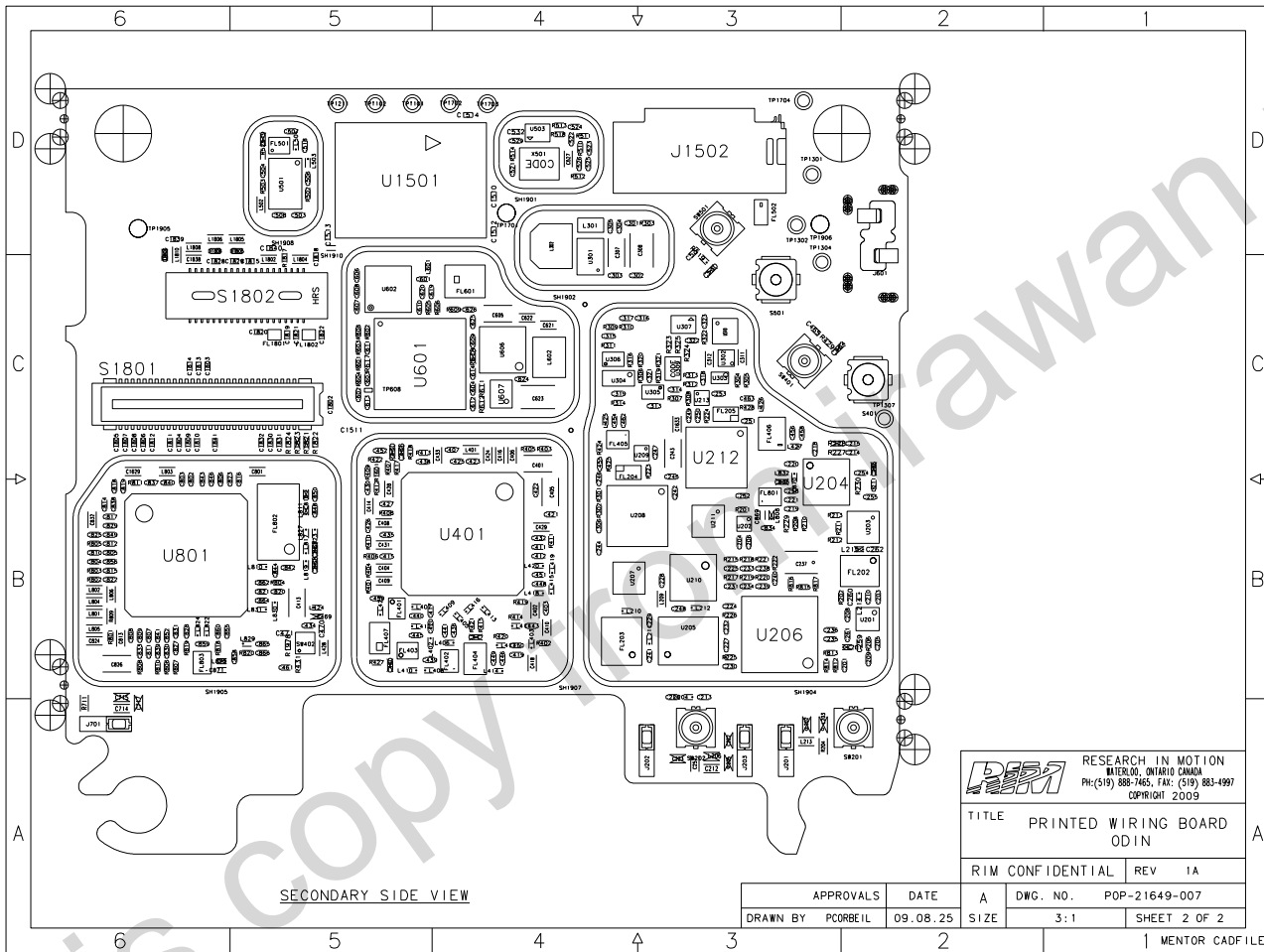
- NOTES:
1. MAXIMUM BREAKAWAY VESTIGE FROM MAIN BOARD EDGE SHALL BE 0.3MM.
  2. ACCEPTABILITY OF ASSEMBLY TO MEET IPC 610 (LATEST ISSUE), CLASS 2.
  3. THE SOLDER AND ASSEMBLY PROCESS SHALL COMPLY WITH DIRECTIVE 2005/95/EC (ROHS) AND RIM ENVIRONMENTAL SPECIFICATIONS.

**RIM** RESEARCH IN MOTION  
 WATERLOO, ONTARIO CANADA  
 PH: (519) 888-7465, FAX: (519) 883-4997  
 COPYRIGHT 2009

TITLE PRINTED WIRING BOARD  
 ODIN

RIM CONFIDENTIAL REV 1A

APPROVALS	DATE	A	DWG. NO.	POP-21649-007
DRAWN BY PCORBEIL	09.08.25	S1Z	2.5:1	SHEET 1 OF 2



**RESEARCH IN MOTION**  
 WATERLOO, ONTARIO CANADA  
 PH: (519) 886-7465, FAX: (519) 883-4997  
 COPYRIGHT 2005

TITLE PRINTED WIRING BOARD  
 ODIN

RIM CONFIDENTIAL REV 1A

APPROVALS	DATE	A	DWG. NO.	POP-21649-007
DRAWN BY PCORBEIL	09.08.25	SIZE	3:1	SHEET 2 OF 2

MENTOR CADFILE