

PRIMARY SIDE VIEW

REVISIONS				
REV	ECN	DESCRIPTION	DFTS	DATE
1A	15827	PRE-PRODUCTION RELEASE	PC	09.08.25

- NOTES:
1. MAXIMUM BREAKAWAY VESTIGE FROM MAIN BOARD EDGE SHALL BE 0.3MM.
 2. ACCEPTABILITY OF ASSEMBLY TO MEET IPC 610 (LATEST ISSUE), CLASS 2.
 3. THE SOLDER AND ASSEMBLY PROCESS SHALL COMPLY WITH DIRECTIVE 2005/95/EC (ROHS) AND RIM ENVIRONMENTAL SPECIFICATIONS.

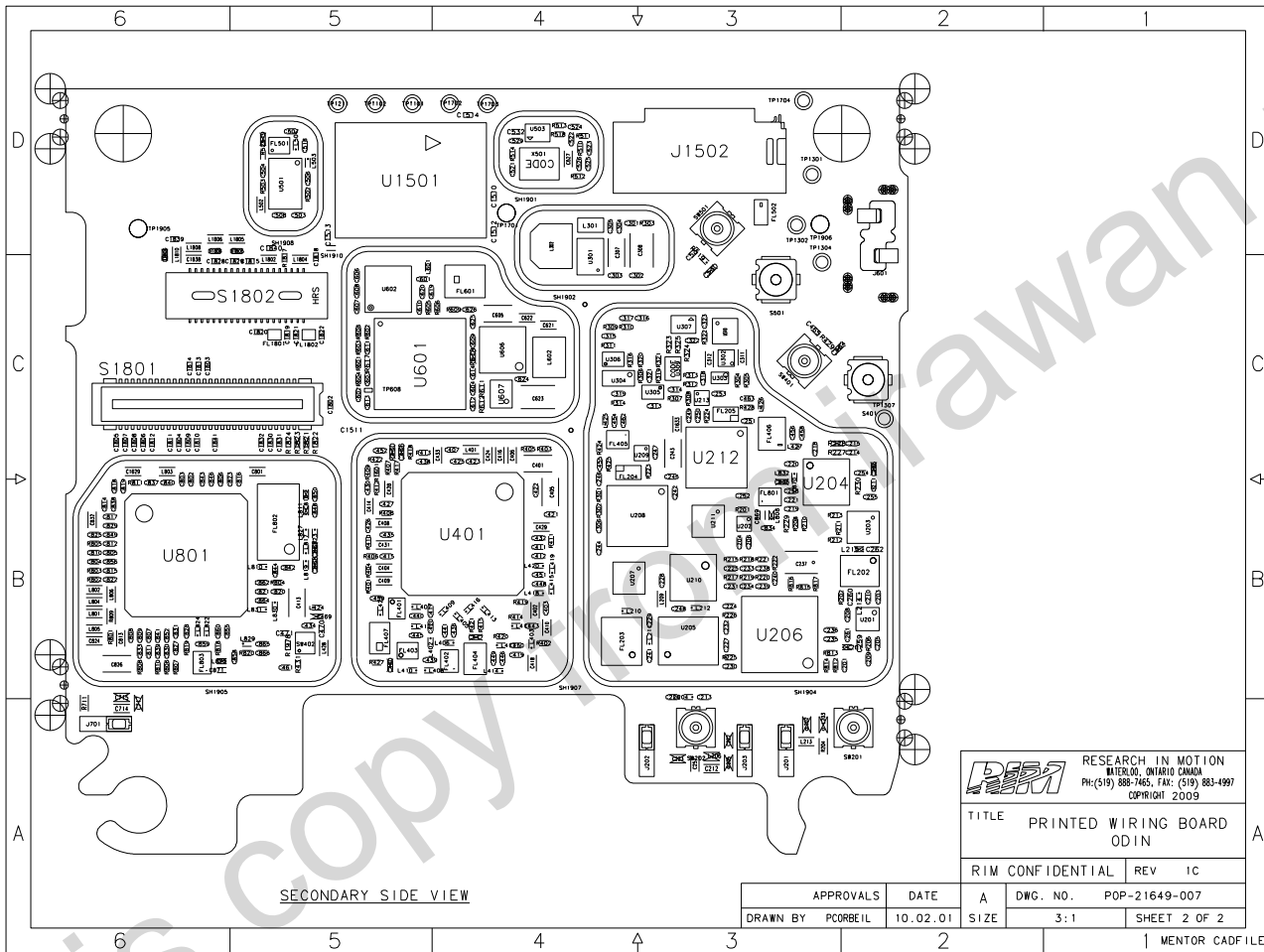
RIM RESEARCH IN MOTION
 WATERLOO, ONTARIO CANADA
 PH: (519) 888-7465, FAX: (519) 883-4997
 COPYRIGHT 2009

TITLE PRINTED WIRING BOARD
 ODIN

RIM CONFIDENTIAL REV 1C

APPROVALS	DATE	A	DWG. NO.	POP-21649-007
DRAWN BY PCORBEIL	10.02.01	S	SIZE	2.5:1

MENTOR CADFILE



RM RESEARCH IN MOTION
 WATERLOO, ONTARIO CANADA
 PH: (519) 886-7465, FAX: (519) 883-4997
 COPYRIGHT 2005

TITLE PRINTED WIRING BOARD
 ODIN

RIM CONFIDENTIAL REV 1C

APPROVALS	DATE	A	DWG. NO.	POP-21649-007
DRAWN BY	PCORBEIL	10.02.01	SIZE	3:1

SHEET 2 OF 2
 MENTOR CADFILE