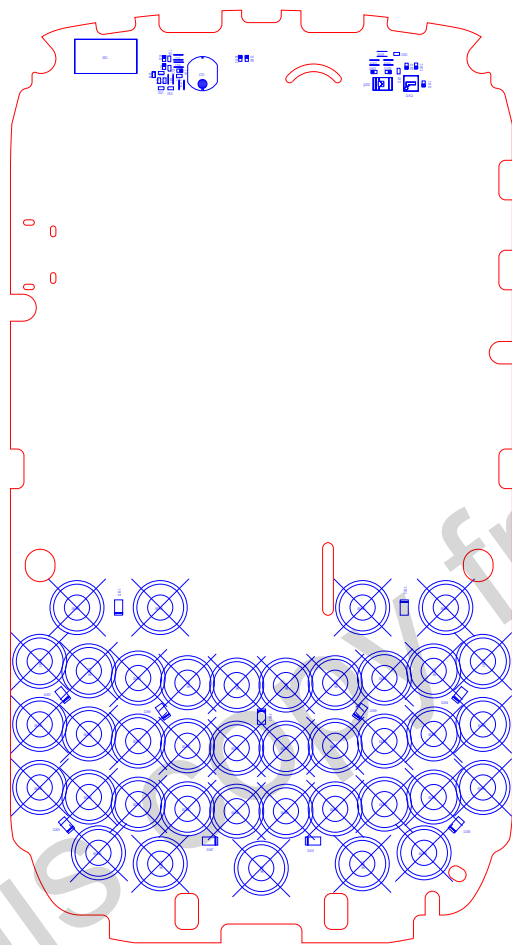



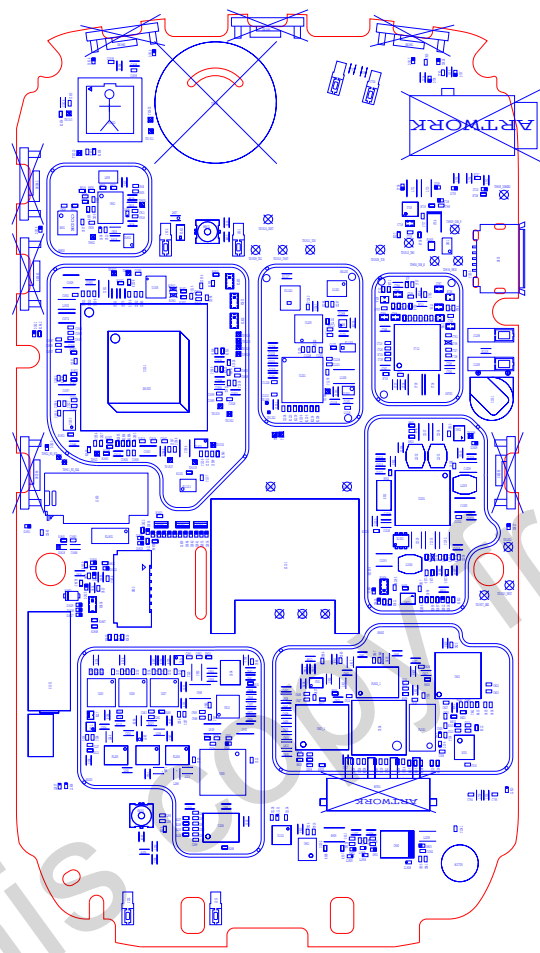
REVISIONS				
REV	ECN	DESCRIPTION	DFTS	DATE
1	19281	PRODUCTION RELEASE	TF	6JULY10
2	19440	PRODUCTION RELEASE	TF	20JUL10
3	30115	X601 to XTL-00076-002	SL	22Sep10
4	30142	U1401 to PRG-31766-002	SS	29Sep10
5	30367	S802 to CON-00405-002	SS	19Nov10
6	31103	X901 to XTL-00011-111	SS	25Nov10



NOTES:

1. ACCEPTABILITY OF ASSEMBLY TO MEET IPC 610 (LATEST ISSUE), CLASS 2.
2. THE SOLDER AND ASSEMBLY PROCESS SHALL COMPLY WITH DIRECTIVE 2002/95/EC (ROHS) AND RIM ENVIRONMENTAL SPECIFICATIONS.

 RESEARCH IN MOTION COPYRIGHT 2010	
TITLE                      PRINTED WIRING BOARD R011 MAIN BOARD	
RIM CONFIDENTIAL	REV: 6
APPROVALS	DATE
DRAWN BY: T FLEEGLE	10.11.25
A	DWG. NO. POP-30365-009
SIZE	SCALE 1:1
SHEET 1 of 2	



This drawing is from irawan margono



RESEARCH IN MOTION  
COPYRIGHT

TITLE PRINTED WIRING BOARD  
R011 MAIN BOARD

RIM CONFIDENTIAL REV: 6

APPROVALS	DATE	A	DWG. NO. POP-30365-009
DRAWN BY: T FLEEGL	10.11.25	SIZE	SCALE 1:1 SHEET 2 of 2