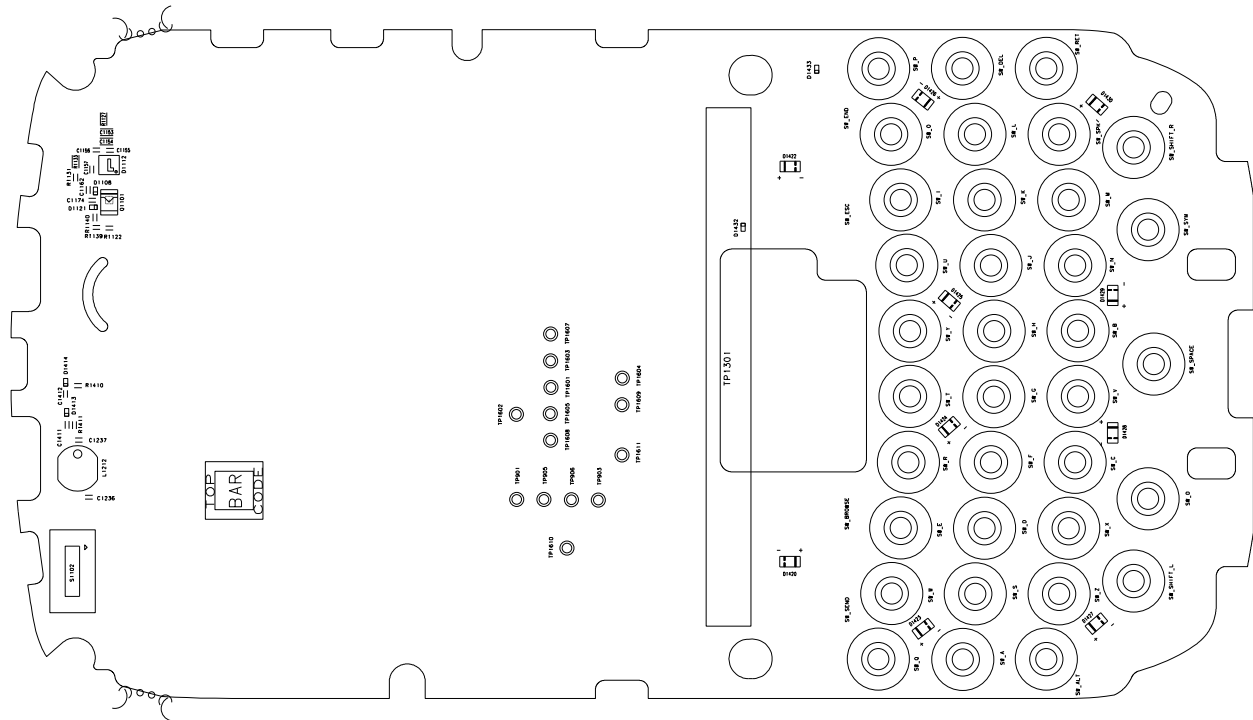


6 5 4 3 2 1

6 5 4 3 2 1

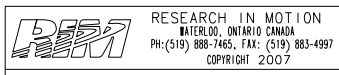
D
C
B
A

D
C
B
A



PCB ASSEMBLY VIEWED FROM PRIMARY SIDE

- NOTES:
1. ACCEPTABILITY OF ASSEMBLY TO MEET IPC 610 (LATEST ISSUE), CLASS 2.
 2. THE SOLDER AND ASSEMBLY PROCESS SHALL COMPLY WITH DIRECTIVE 2002/95/EC (ROHS) AND RIM ENVIRONMENTAL SPECIFICATIONS.



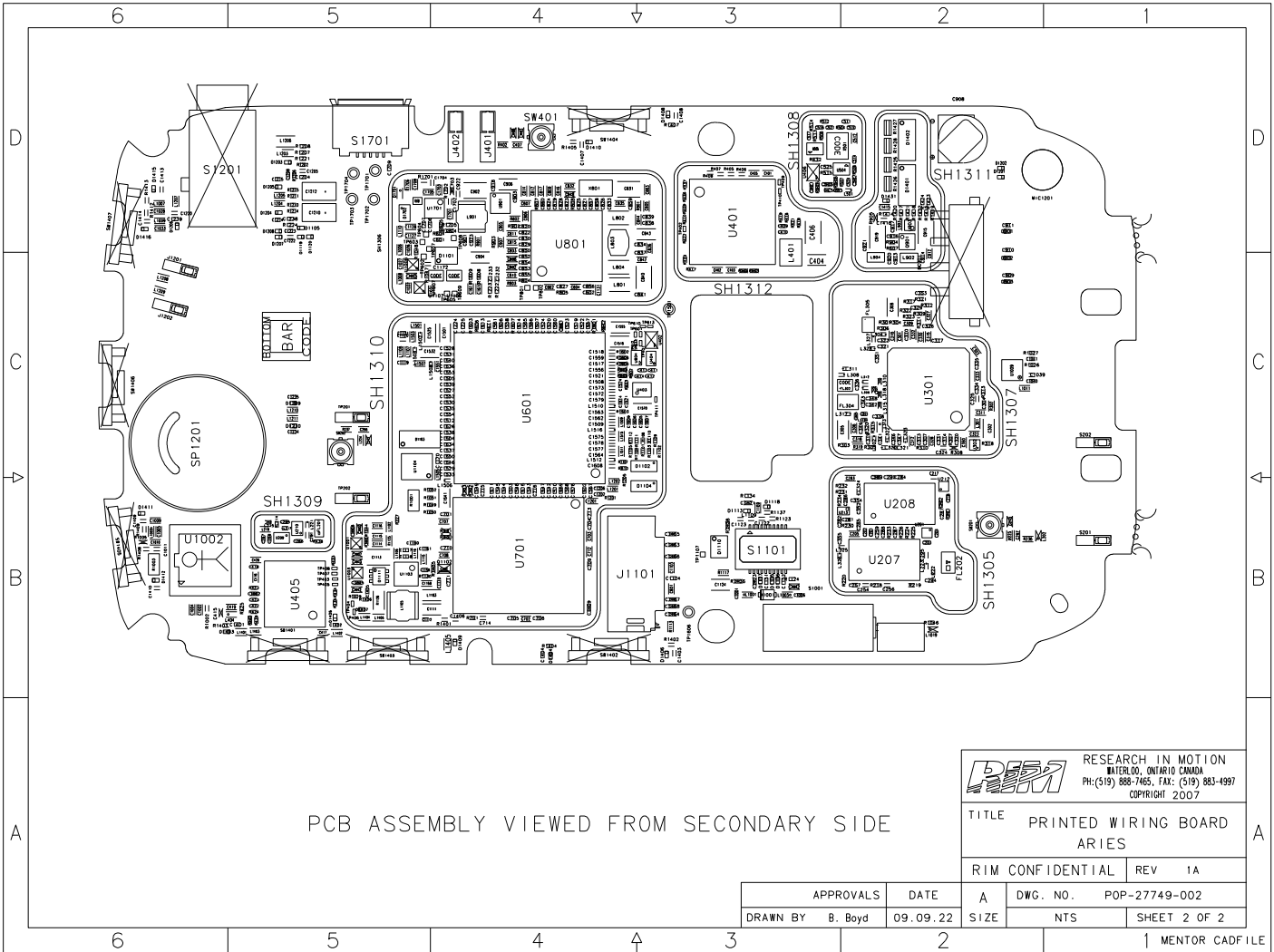
TITLE PRINTED WIRING BOARD
ARIES

RIM CONFIDENTIAL REV 1A

APPROVALS	DATE
DRAWN BY B. BOYD	09.09.22

A	DWG. NO. POP-27749-002
SIZE	NTS SHEET 1 OF 2

1 MENTOR CAD FILE



PCB ASSEMBLY VIEWED FROM SECONDARY SIDE

RIM RESEARCH IN MOTION
 WATERLOO, ONTARIO CANADA
 PH: (519) 888-7465, FAX: (519) 883-4997
 COPYRIGHT 2007

TITLE PRINTED WIRING BOARD
 ARIES

RIM CONFIDENTIAL REV 1A

A DWG. NO. POP-27749-002

SIZE NTS SHEET 2 OF 2

APPROVALS	DATE
DRAWN BY B. Boyd	09.09.22

↑ MENTOR CADFILE